

MAXIM GORKI THEATER

Technical Rider – Main Stage

Am Festungsgraben 2

10117 Berlin

Index	
Index.....	2
Contact list	3
Technical Departments	3
Theatre workshops	3
Rehearsal stages.....	3
Stage view	4
Measurements and technical specification	6
Access to stage	Fehler! Textmarke nicht definiert.
Relevant dimensions for scenography	6
Stage dimensions	7
Portal dimensions	8
Work galleries.....	8
Forestage / Proscenium.....	9
Understage machinery.....	9
Overstage machinery / Fly system	9
Projection Screens.....	11
Auditorium	12
Lighting.....	14
Fixed installation.....	14
Stage lighting: Standard setup	15
Mobile lighting equipment.....	18
Additional lighting equipment	19
Sound	19
Video.....	21
Props.....	22
Fog machines.....	22
Music instruments.....	22
Dressers and Hair & Make up Dept.....	23

Contact list

Technical Departments

Maxim Gorki Theatre Am Festungsgraben 2 10117 Berlin technik@gorki.de
Staff entrance Dorotheenstr. 9 10117 Berlin

Main number		+49 30 202210
Technical Direction	Bernd Klein, <i>Technical Director</i>	-339
	Benedikt Schröter, <i>Tech Production Manager</i>	-470
	Vanessa Wujanz, <i>Tech Production Manager Touring</i>	-336
Stage design	Alissa Kolbusch, <i>Head of Department</i>	-326
	Scenography assistants	-328
Stage Tech	Robert Rammelt <i>Head of Department</i>	-330
Lighting	Murat Özuzun, <i>Head of Department</i>	-317
Sound & Video	Christopher v. Nathusius, <i>Head of Department</i>	-334
Props	Jens Gebhardt, <i>Head of Department</i>	-329
Hair & Make up	Paula Karer, <i>Head of Department</i>	-363
Dressers	Andrea Schulz, <i>Head of Department</i>	-227

Theatre workshops

Bühnenservice Am Wriezener Bahnhof 1 10243 Berlin trettau@gorki.de

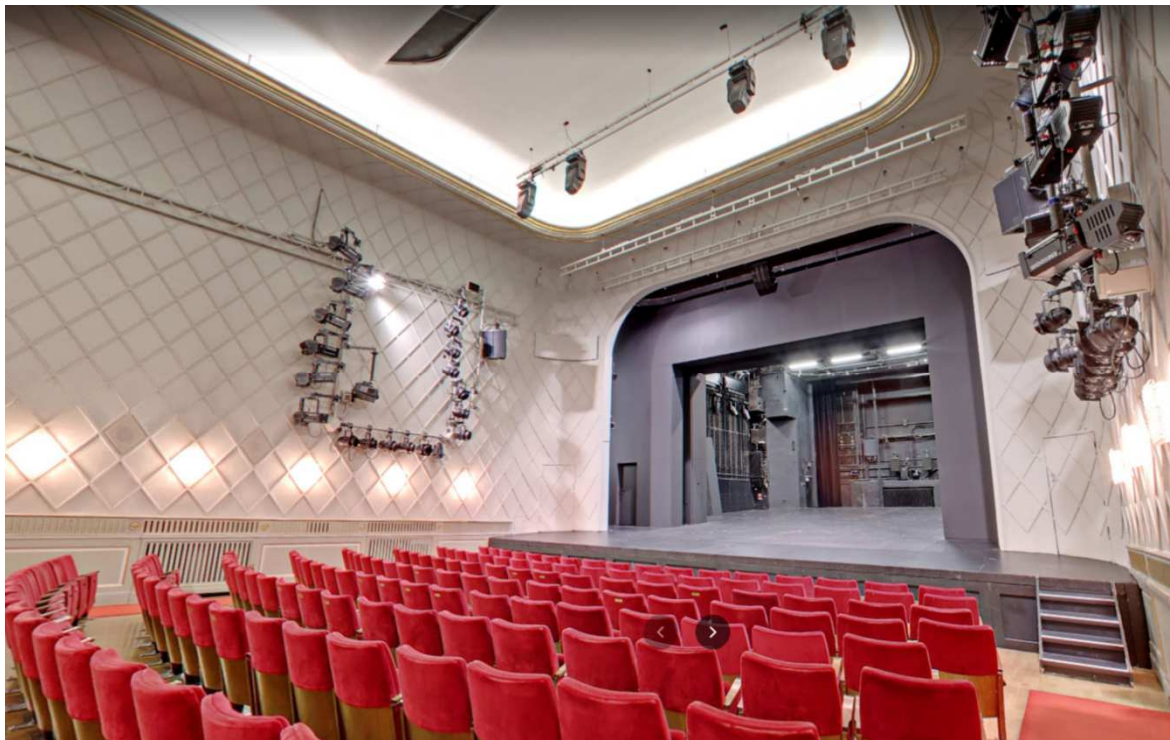
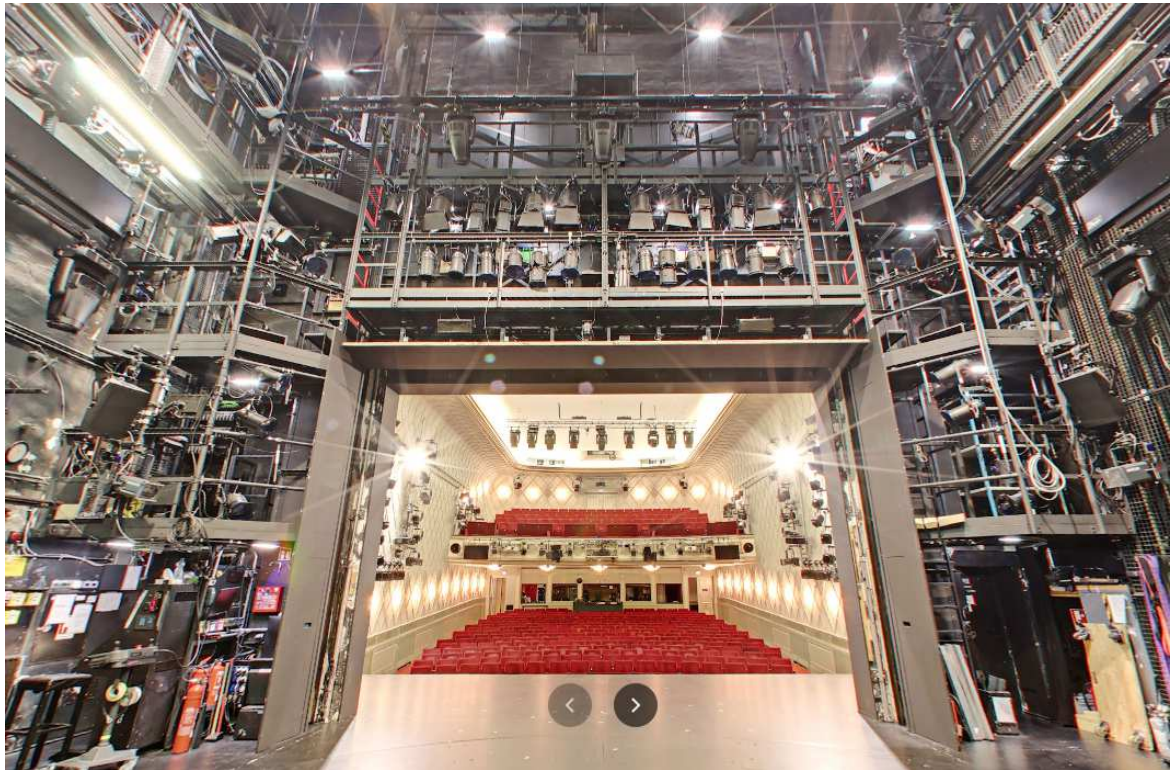
Main number:		+49 30 202210
Workshops	Marcus Trettau, <i>Head of Department</i>	-601
	Maik Spät, <i>Deputy Head of Department</i>	-602
Costume	Thomas Maché, <i>Head of Department</i>	-701

Rehearsal stages

Hauptstraße 13 Entrance A 4th floor 10317 Berlin +49 30 36500492

Stage view

360° interior view of stage and auditorium (Google Maps)





360° View Stage: <https://maps.app.goo.gl/TNqcyCcx4M6nyx8a7>

360° View Auditorium: <https://maps.app.goo.gl/djY4GB13YRMAPxfM6>

360° View Balcony: <https://maps.app.goo.gl/H9uPJStzKzBxKd6f6>

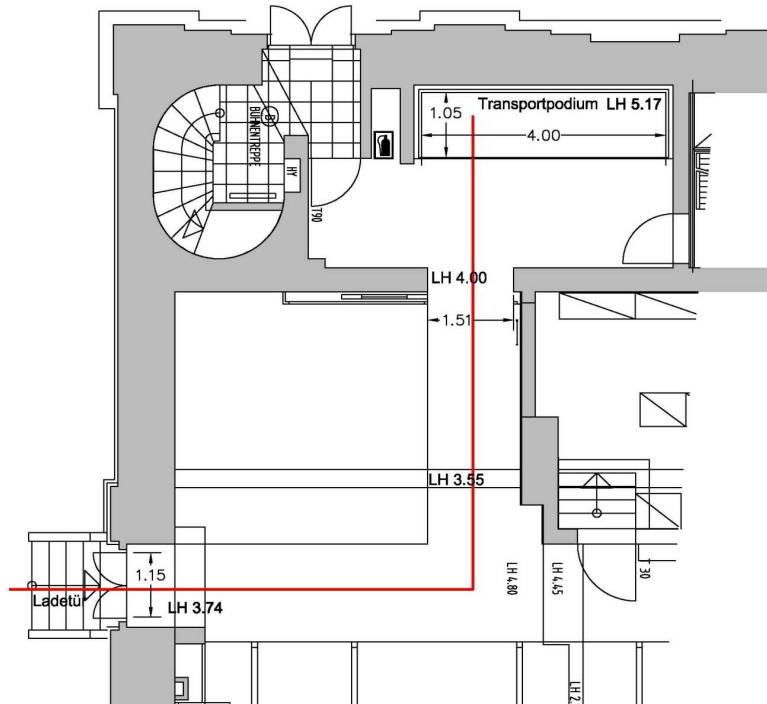
360° View Foyers: <https://maps.app.goo.gl/6VVVhWDcisUkCm6n7>

<https://maps.app.goo.gl/qcSHW8Mf9Pd9XVhi6>

MEASUREMENTS AND TECHNICAL SPECIFICATION

Access to stage

The loading route leads via the loading door (Dorotheenstraße 9, access by truck possible) via a freight elevator to the stage.



Relevant dimensions for scenography

Loading door (entrance)	Height:	3,74 m
	Width:	1,15 m
Fire door	Height:	4,04 m
	Width:	1,45 m
Transportation platform (to stage)	max. interior dimension	
	Height:	5,17 m
	Width:	4,05 m
	Depth:	1,05 m
	max. load capacity	
static / dynamic		2,50 t / 1,00 t

Transportation platform (external scenery storage - <i>Lindentunnel</i>)	Height:	3,20 m
	Width:	2,70 m
	Depth:	4,70 m
max. load capacity		
dynamisch:		1,00 t
Swap body for scenery storage (20 foot container, TEU)	Height:	2,20 m
	Width:	2,30 m
	Length:	7,00 m

1.1.1 Stage dimensions

Floor plan dimensions relating to baseline (N). Baseline = rear edge of technical portal.

Stage depth	forestage (proscenium) ↔ N	6,01 m
	N ↔ rear wall	10,90 m
Stage width	forestage (proscenium)	12,45 m
	main stage	12,03 m
	rear stage	10,26 m
Stage height	forestage (proscenium) =max. height VB-hoist 1	6,63 m
	main stage =max. height hoist 1	13,06 m
	rear stage =max. height HB-hoist 1	5,61 m
Raked stage	falling gradient	4,2%

Important note regarding the use of the stage for performance: Quick costume and makeup changes must take place on stage – the side area is not suitable for this!

Portal dimensions

Decorative portal („Schmuckportal“)	Height: Width: Depth: position: (rear edge ↔ N) door height	6,65 m 9,37 m 0,31 m 3,34 m 1,80 m
Concrete portal („Mauerportal“)	Height: Width: Depth: position: rear edge ↔ N	4,80 m 7,09 m 0,52 m 1,35 m
Technical portal	Height (variable): Width: Depth:	1,10 m – 4,75 m 7,29 m 0,81 m
Iron curtain* (Safety curtain)	Height: Width: Depth: position: rear edge ↔ N bot- tom edge at highest position:	5,60 m 7,65 m 0,17 m 1,08 m 5,04 m
Door in iron curtain (opens to stage)	Height: Width:	1,85 m 1,00 m

Iron Curtain must be able to close smoke-tight at all times!

Work galleries

First gallery	Height (proscenium)	6,88 m
	Height (rear wall / upstage)	6,66 m
Second gallery	Height (proscenium)	11.44 m
	Height (rear wall / upstage)	11.22 m
Height difference is due to raked stage!		

Forestage / Proscenium

Floor openings:	3x7 m (21 removable floor plates)
	1x7 m (7 removable floor plates)
Forestage pit maximum height:	approx. 2.10 m

Understage machinery

Revolving stage	
Diameter	9,75 m
Position (N ↔ center)	4,20 m
Total traffic load	5.000 kg (verteilt)
Max. static load	500 kg /m ² (4.90 kN)
Max. dynamic load	250kg / m ² (2.45 kN)
Rotational speed (outer edge)	V _{min} =0,01 m/sec
continuously adjustable	V _{max} =0,80 m/sec

Overstage machinery / Fly system

Diameter of all battens (steel pipes) is 60,3 mm.

All flybars have side extensions on both sides. The lengths of this extensions are different, to optimise the use of the available spaces on side.

All widths in the following list are given without side extensions.

Flybar position	Name	Max. load capacity	Vertical travel	Width	Info
Auditorium	BLZ Saal	400kg	7,80 m	9,00 m	motorised
Forestage / Proscenium	VB1	350 kg	8,90 m	8,00 m	motorised, 3 lift lines
	VB2	350 kg	6,95 m	10,00 m	
	VB3	350 kg	6,85 m	10,00 m	

	VB4	350 kg	7,05 m	8,00 m	motorised, 4 lift lines
	VB5	350 kg	9,50 m	8,20 m	
	VB6	350 kg	9,50 m	8,20 m	
	VB7	350 kg	9,50 m	8,00 m	
	VB Links	250 kg	6,85 m	1,20 m	motorised, 3 lift lines
	VB Rechts	250 kg	6,85 m	1,20 m	

Flybar position	Name	Max. load capacity	Vertical travel	Width	Info
Main stage	H1	200 kg	12,80 m	7,85 m	manual flybar, 4 lift lines
	H2	200 kg	12,80 m	8,60 m	manual flybar, 4 lift lines
	H4, H8, H10, H12, H14, H15, H17, H19, H21, H23, H25	200 kg	12,80 m	9,00 m	manual flybars, 4 lift lines
	M3	350 kg	12,80 m	8,80 m	motorised flybars, 4 lift lines
	M5, M6, M7, M9, M11, M13, M16, M18, M20, M22, M24, M26	350 kg	12,80 m	9,00 m	motorised flybars, 4 lift lines
	BLZ 1	500 kg	12,80 m	9,00 m	motorised, lighting
	H27 + Rund Links + Rund Rechts	200 kg (H27) +200 kg or 200 kg (H27) +2x100 kg	12,80 m	8,50 + 5,20 + 5,20 m (without round part)	manual cyclorama flybar (with H27) or panorama (side) flybars

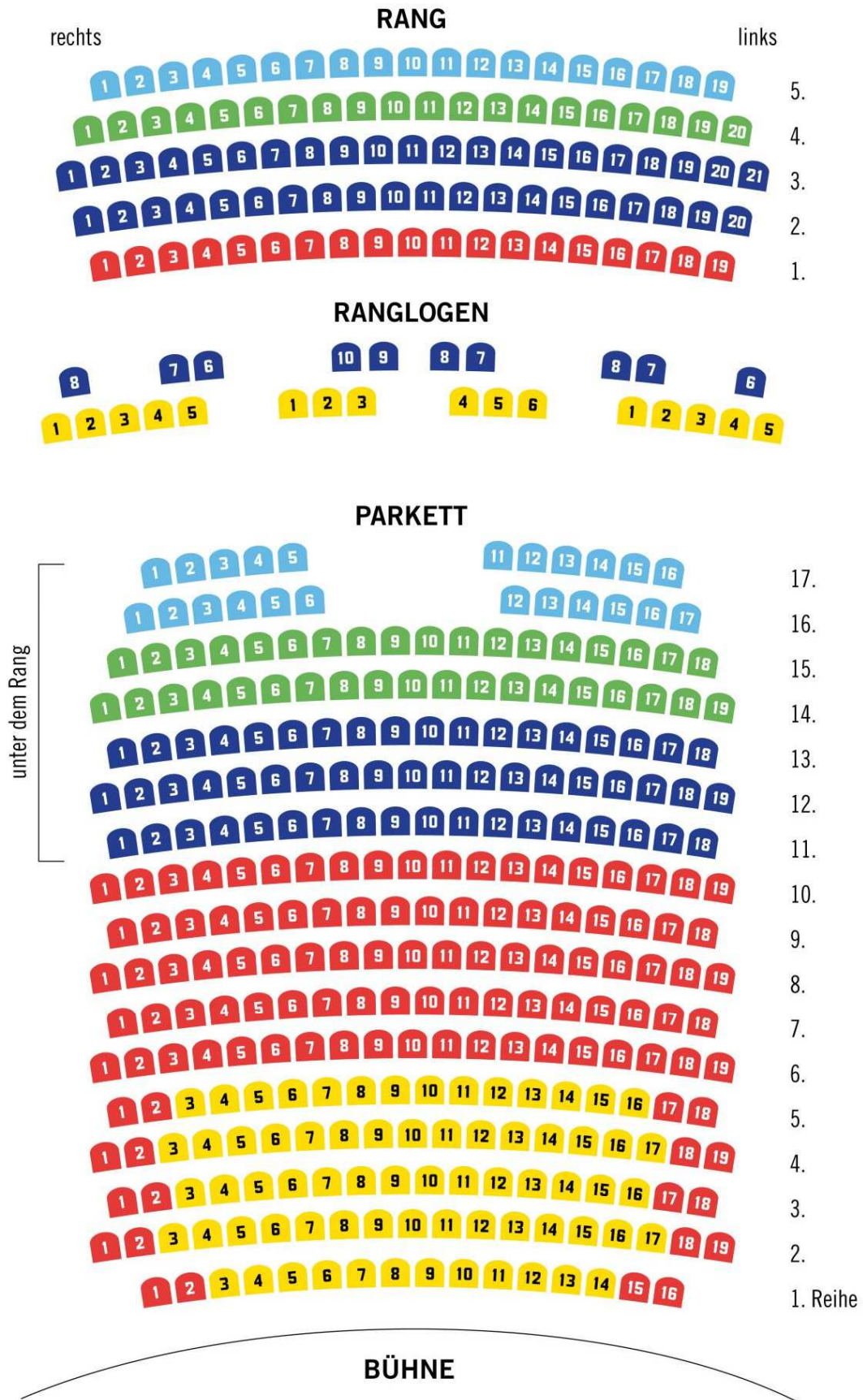
	PZ1-PZ6	200 kg	12,80 m	-/	6 mobile point hoists
Rear stage	HB1	300kg	5.61 m	5,60 m	motorised flybars
	HB2 rund	300 kg		8,60 m	
	HB3	300 kg		7,50 m	

Projection Screens

Screens				
Ratio	Dimension in cm	Type	Name	Info
16:9	280x160 (270x150)	front proj. / white	Stumpfl Vario 32	aluminium frame with feet
4:3	360x270 (350x260)	front&rear proj. white / grey	Stumpfl Vario 32	aluminium frame with feet front: white / rear: grey
special	320x245 (310x235)	rear proj. / grey	Stumpfl Vario 32	aluminium frame with feet
16:9	365x210 (345x190)	front proj. / white	Stumpfl Vario 64	aluminium frame with feet 2 pieces available
16:9	460x270 (450x260)	Front &rear proj. white / grey	Stumpfl Vario 64	aluminium frame with feet front: white / rear: grey
4:3	600x450 (590x440)	front proj. / white	Stumpfl Vario 64	aluminium-frame with feet
16:9	752x431 (732x411)	front proj. / white	Stumpfl Vario 64	aluminium frame with feet
16:10	752x477 (732x457)	rear proj. / grey	Stumpfl Vario 64	aluminium frame with feet
15,6:9	600x346 (580x326)	rear proj. / grey	Stumpfl Vario 64	aluminium frame with feet

Auditorium

Pit	298 seats (17 rows)	
	4 wheelchair locations (12 seats to be removed)	
	auditorium width	12,50 m
	pit length	15,00 m
	total auditorium height	09,50 m
Tier	99 seats (tier, 5 rows)	
	26 seats (tier loge, 2 rows)	
	auditorium width	12,50 m
	tier length	6,80 m



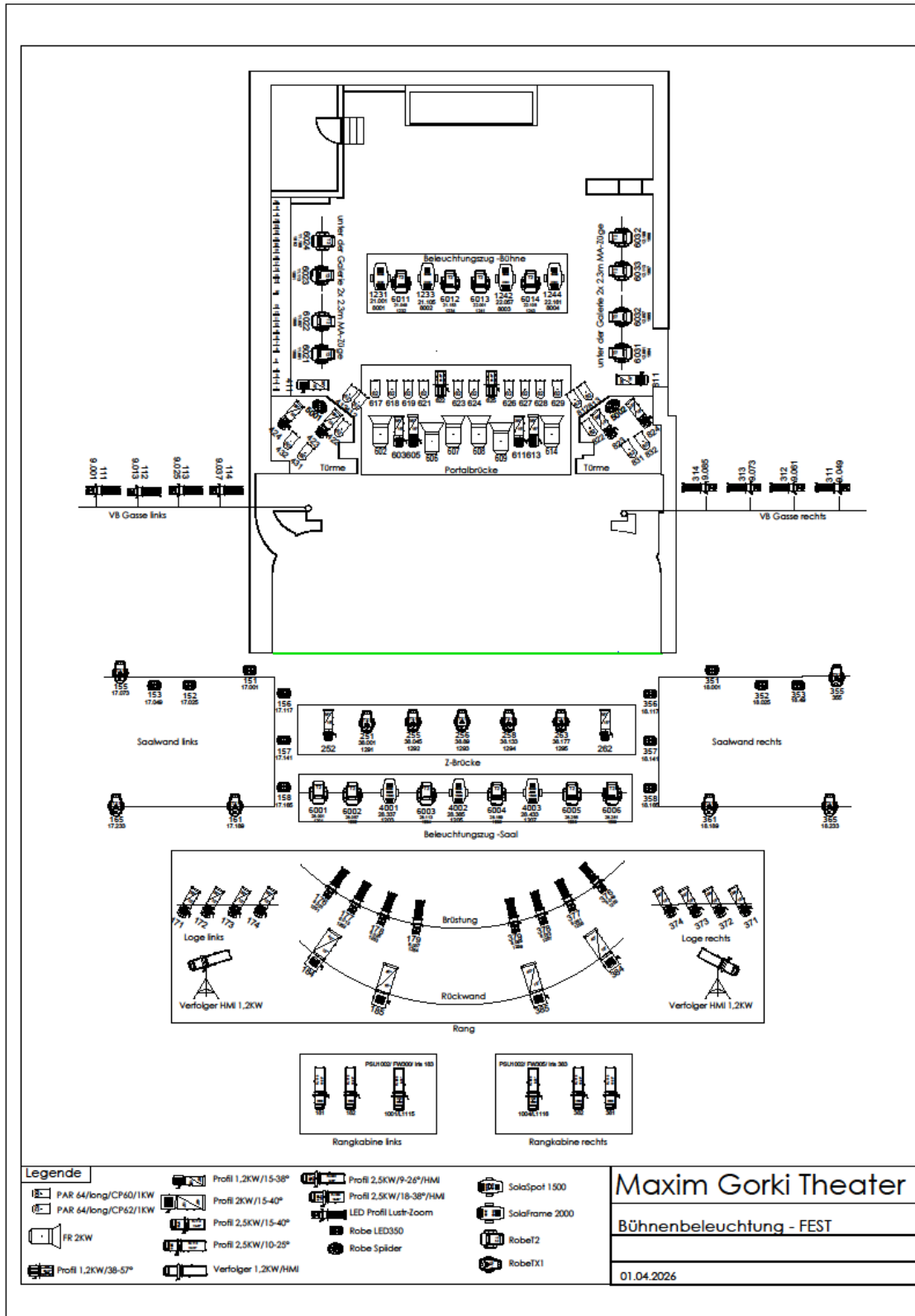
■ Kategorie I
 ■ Kategorie II
 ■ Kategorie III
 ■ Kategorie IV
 ■ Kategorie V

Lighting

Fixed installation

Lighting control booth	lighting desks	<ul style="list-style-type: none"> • main desk ETC APEX-10 • emergency desk ETC ION-XE • Network protocol sACN
	network access points	<ul style="list-style-type: none"> • auditorium pit • stage manager's panel • rear stage • rank
Dimmers	dimmer Transtechnik	<ul style="list-style-type: none"> • 234 x 2,5kW • 44 x 5 kW • 86 x 2,5kW, ND • 12 x 5kW, ND
	dimmer LSC GEN VI	<ul style="list-style-type: none"> • 72 x 2,5 kW
	dimmer MA-Lighting	<ul style="list-style-type: none"> • 12 x 3,7kW
Circuit points	three phase current sockets	<ul style="list-style-type: none"> • 17 x CEE 32A, 400V, ND
	sockets in junction boxes	<ul style="list-style-type: none"> • 16A / 220V AC schuko socket • 63A Socket (DIN 15564) • 32A CEE 5-pole, 400V • fluorescent tube 3-pole. +PE, HAN3 • multicore 16-pole +PE, HAN16 • DMX 5-pole

Stage lighting: Standard setup



Stage			
Location	Type	Amount	kW
Forestage left ("VB-Gasse")	ETC S4 Series 3 Lustr X8	4	1,2
Forestage right ("VB-Gasse")	ETC S4 Series 3 Lustr X8	4	1,2
Technical portal left bottom	profile spot	1	1,2
	PAR64 /CP62	2	1
Technical portal left middle	Fresnel	1	2
	PAR64 /CP62	1	1
	profile spot	2	1,2
Technical portal left top	PAR64 /CP60/CP62	2	1
Technical portal right bottom	profile spot	1	1,2
	PAR64 /CP62	2	1
Technical portal right middle	Fresnel	1	2
	PAR64 /CP62	1	1
	profile spot	2	1,2
Technical portal right top	PAR64 /CP60/CP62	2	1
Lighting bridge (portal)	Fresnel	6	2
	profile spot	6	1,2
	PAR64 /CP62	10	1
	PAR64 /CP60	2	1
Lighting flybar (stage)	Robe Robin T2 Spot	4	0,84
	SolaFrame 2000 High CRI	4	0,6
Fly gallery left	-		
Fly gallery right	PAR64 /CP62	2	1
Lighting flybar stage left	Robe Robin T2 Spot	4	0,84
Lighting flybar stage right	Robe Robin T2 Spot	4	0,84

Auditorium			
Location	Type	Amount	kW
Tier booth left	profile spot HMI, FW	1	2,5
	profile spot	2	2,5
Tier booth right	profile spot HMI, FW	1	2,5
	profile spot	2	2,5
Tier, rear wall, left	profile spot	2	2
Tier, rear wall, right	profile spot	2	2
Tier, loge left	profile spot	4	1,2
	follower spot HMI	1	1,2
Tier, loge right	profile spot	4	1,2
	follower spot HMI	1	1,2
Tier balustrade	ETC S4 Series 3 Lustr X8	8	1,2
	FR HMI	2	1,2
Lighting flybar (auditorium)	Robe Robin T2 Spot	6	0,85
	SolaSpot Pro 1500	3	0,4
Audience bridge ("Z-Brücke")	profile spot	2	1,2
	Robe TX1	5	2,5
Auditorium wall left	Robe TX1	3	1,2
	Robe Ledbeam 350	6	1
Auditorium wall right	Robe TX1	3	1,2
	Robe Ledbeam 350	6	1

Mobile lighting equipment

Type	Amount	kW	Info
PC / Fresnel			
prismatic lens ADB	6	0,65	barn door
Fresnel ADB	5	2	barn door
Fresnel HMI Arri	4	1,2	electrical shutter, barn door
Profile spots			
profile Niethammer HPZ 115	6	1,2	zoom profile
profile ETC 50°	2	0,75	
PAR			
Astera AX9	6	105W	LED RGBW/ Akku
PAR 64, BAR CP62	4	6x1	
PAR 64, Lang, CP61/62	15	1	
PAR 64, Short, CP61/62	10	1	
PAR Cameo Zenit P100 DTW	8	0,125	LED WW
Moving Lights			
Robe Robin T1 Profil	10	0,55	Profil/Spot
Robe Robin T2 Profil	2	0,85	Profil/Spot
Robe Spiider	4	0,66	Washlight
Robe LEDBeam 350	6	0,45	Washlight
SolaFrame 2000 High CRI	2	0,6	Profil/Spot
SolaSpot Pro 1500	3	0,4	Profil/Spot
Flood lights			
LDDE NanoPix CYC	5	0,205	RGB WW CW
Cameo Zenit W 600	4	0,565	RGBW barn door
ADJ Flood 36	4	0,036	UV-LED
Ramps, LED BAR			
NanoPix Slim 1200	12	0,077	RGB WW KW, 4 Einzel-PSU 3 MAXI-PSU 2x3
Cameo Pixbar 600 Pro IP 65	2	0,160	RGBWAUV
Cameo Pixbar 600 Pro	2	0,160	RGBWAUV
LED strips and tubes			
LED stripes cold white	14		10x2m / 2x1m / 2x 0.5m
Astera NYX Bulb	16	0,1	
Astera FP1 Titan Tube	8	0,048 -0,072	RGBA-Mint
Strobes / Hazer / Fan			
Strobe Atomic 3000	2	1,5	DMX connection

Hazer Look Unique 2.1	2	1,5	DMX connection
MDG Atmosphere ATMe Hazer	1	0,715	DMX connection
Cameo Instant AIR 2000 Pro	2	0,250	DMX connection

Additional lighting equipment

Type	Amount	Info
floor stand	4	Niethammer / tripod / h=10cm
hinged roll stand	2	Manfrotto / h=1,32-2,15 m / 30kg
hinged stand "beta 3 al"	2	Despar / h=0,96-2,50m / 40kg
telescope stand	4	Strand Lighting / h=1,50-4,50m / 25kg
crank stand "Samson"	2	Strand Lighting / h=1,55-2,55m / 45kg
alley towers	2	h=1,80m / 3 floors

Sound

Location FOH: fixed, open in the pit, rear wall, middle

Mixing console	LAWO MC ² 96 Grand Production Console: <ul style="list-style-type: none"> • 40 strips (configurable) • FX-Engine: Waves SoundGrid with Mercury-Bundle
Audio content delivery	<ul style="list-style-type: none"> • Ableton Live 11 with Mac OSX • Audio Interfaces: RME MADiface XT, DANTE Virtual Soundcard
Effects	<ul style="list-style-type: none"> • RELAB LX480 Plug IN • Guitar Rig Pro 5 • Antares Auto Tune • Waves Mercury Bundle
In Ear Monitoring	<ul style="list-style-type: none"> • 6 IEM-Transmitters Sennheiser SR2050/EK-IEM-G4 Receivers
Microport system	<ul style="list-style-type: none"> • 16 channels Sony DWX Digital Wireless • 14x DWT B01 pocket transmitter • DPA 4061 Lavalier microphones • 10x DWM 02 hand-held transmitter • 4 x DWT-P01N XLR plug-on transmitter
Speaker systems	<p>Portal: 4x d&b AL90</p> <p>Center: 4x d&b T10</p> <p>Subwoofer: 4x d&b Y-Sub</p>

	<p>Infra: 2x KSL-SUB</p> <p>Stage:</p> <p>rear stage: 4x d&b 602 / 2x d&b E15x / 2x d&b E12</p> <p>portal bridge: directed to the back 4x E1 / to the front 2x E1</p> <p>32 sound effects speaker in the auditorium</p> <p>mobile monitors: 6x d&B 44S / 4x d&b E6 / 2x d&b E8/ 6x d&b M6</p>
Intercom	<p>Riedel-Intercom with permanently installed intercom stations:</p> <p>Stage Managers desk</p> <p>Lighting booth</p> <p>Auditorium directors desk</p> <p>Sound Desk FOH</p> <p>Lighting desk position in auditorium</p> <p>Video booth</p> <p>Surtitle booth</p> <p>Props room</p> <p>Transfer option to Motorola walkies on three channels</p>
Stage manager's system	<p>41 light signals (group switching possible)</p> <p>Special sound effect bells</p> <p>Broadcast call, single call to various rooms, group call technical areas</p> <p>Video and sound monitoring</p>

Video

Location of video booth: pit, booth in the back, stage left

Working space for surtitles: video room on 3rd floor

Video feed system	<ul style="list-style-type: none"> • Software: Isadora 4 (Troikatronix) • Optional QLAB 4 (Figure53) • Hardware: MacPro M2 Ultra • VIDEO-OUT: 5x up to 1080p50 • VIDEO-IN: 4x up to 1080p50
Signal distribution	<ul style="list-style-type: none"> • VIDEO via SDI • BLACKMAGIC VIDEOHUB 72 routing matrix • various junction boxes in stage area (SDI, CAT) • further junction boxes close to stage area (audience, foyers, etc.)
SDI peripherals	<ul style="list-style-type: none"> • BLACKMAGIC ATEM ME/2 Video-Mixer • BLACKMAGIC Multiview 16 • various FO/SDI/HDMI/analog converters
Video projectors	<ul style="list-style-type: none"> • 1x Panasonic MZ16K WUXGA 16.000 Lumen, fixed to the tier balustrade • 1x Panasonic MZ16K WUXGA 16.000 Lumen for mobile use in stage area • 1x Panasonic MZ11K WUXGA 11.000 Lumen; fixed on portal bridge • MZ11/16K lenses: <ul style="list-style-type: none"> 1x 0,48-0,55:1 1x 0,55-0,69:1 1x 0,69-0,95:1 2x 0,95-1,36:1 2x 1,35-2,10:1 1x 2,10-4,14:1 1x 4,14-7,40:1 • 3x Panasonic MZ770 WUXGA 8.000 Lumen; fixed on the auditorium side walls (right, left, back) • 2x Panasonic MZ770 WUXGA 8.000 Lumen, for mobile use in stage area • MZ770 lenses: <ul style="list-style-type: none"> 2x 0,8:1 1x 0,8-1,0:1 3x 1,3-1,7:1 4x 1,7-2,4:1 1x 2,4-4,7:1 1x 4,7-7,2:1
Monitors	<ul style="list-style-type: none"> • 8x Samsung 43" Digital Signage • 2x Samsung 55" Digital Signage
Cameras	<ul style="list-style-type: none"> • 3x Canon XF205 • 2x Dwarf Connect • 3x Panasonic AW130 HE PTZ Remote camera
Surtitles	<ul style="list-style-type: none"> • Separate surtitle system with Powerpoint or Spectitular • 2 surtitling surfaces left/right of decorative portal, permanently installed • 2x fixed Sanyo PLC XM150 (6000 Lumen, XGA, 4,7-7,2:1)

Props

Fog machines

Type	Output	Amount	Info
MDG Atmosphere	-	1	Haze machine
Base Classic	1300W	2	liquid-vaporizing fog machine
Hazebase Highpower	2600W	2	liquid-vaporizing fog machine
Power Tiny Akku	400W	3	liquid-vaporizing fog machine
Tiny S Akku	-	1	liquid-vaporizing fog machine
Cryo-Fog	2300W	1	CO ₂ ("low lying" fog) CO ₂ order is necessary
Pea Souper Trocken- eis	-	1	Dry ice fog machine Dry ice order is necessary

Music instruments

The props department is in charge of a number of various musical instruments, which are often used in our own productions. If you need any instruments, please check with the props dept.

There are also several upright pianos and a grand piano "August Förster 190" in the house. Availability depends on our playing schedule and must be discussed in advance.

Dressers and Hair & Make Up Dept.

The wardrobes are located above the stage area on second, third and fourth floor.

2nd floor	No. 1	5 places	all places are makeup places
	No. 2	4 places	
	No. 3	3 places	
	No. 4	3 places	
3rd floor	No. 5	6 places	
	No. 6	4 places	
4th floor	Make up	6 places	make up places
		3 places	drying hoods

Additional equipment:

- 2 washing machines
- 1 dryer
- 2 automatic steam irons
- 1 sewing machine